



GMT MONTHLY MEMBERSHIP PROGRESS REPORT

Results as of: 9/30/2023

Multiple District 325

LOCATION: NEPAL

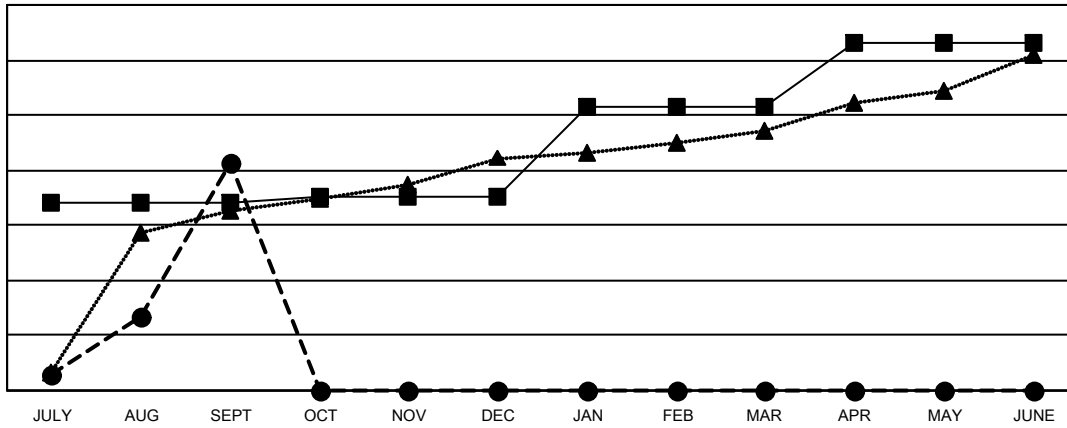
GMT: OPEN

GMT CA 6 - S

Clubs			
RESULTS FOR 2023-2024			
QUARTER	NEW CLUB GOAL	NEW CLUBS	DROPPED CLUBS
JULY/AUG/SEPT	136	166	36
OCT/NOV/DEC	5	0	0
JAN/FEB/MAR	65	0	0
APR/MAY/JUNE	47	0	0

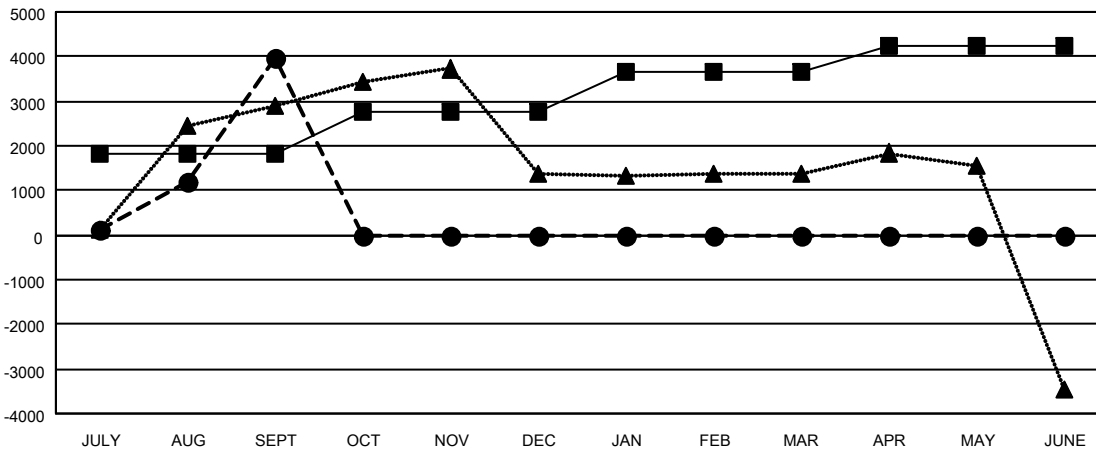
Members			
RESULTS FOR 2023-2024			
QUARTER	MEMBER GROWTH NET GOAL	MEMBER GROWTH ACTUAL	DROPPED MEMBERS ACTUAL (including transfers)
JULY/AUG/SEPT	1,804	6,399	2,198
OCT/NOV/DEC	957	0	0
JAN/FEB/MAR	879	0	0
APR/MAY/JUNE	615	0	0

GOALS AND ACTUAL NEW CLUBS CUMULATIVE



- - CURRENT YEAR GOALS FOR NEW CLUBS
- - CURRENT YEAR ACTUAL NEW CLUBS
- ▲ - LAST YEAR ACTUAL NEW CLUBS

GOALS AND ACTUAL MEMBERS CUMULATIVE



- - MEMBER GROWTH NET GOAL
- - MEMBER GROWTH ACTUAL
- ▲ - LAST YEAR MEMBERSHIP ACTUAL

DROPPED CLUBS: 36	840 CLUBS OF 2004 ADDED 1 OR MORE NEW MEMBERS	GENDER DISTRIBUTION
		MALE 30,527 (68.99%)
		FEMALE 13,720 (31.01%)
DROPPED MEMBERS	CLICK HERE FOR CUMULATIVE MEMBERSHIP DATA	TOTAL FAMILY UNIT MEMBERS 34,043
DECEASED 17		FAMILY MEMBERS PAYING HALF DUES 23,791
CLUB CANCELLED 385		
OTHER 1,797		
TOTAL 2,199		